



WFDVisual: Communicating hydrogeology using new 3D storyboard images

Title: WFDVisual.com: image development phase 2

Project Code: WFD70c

Who this research is intended for: Environmental regulators, managers, and researchers

Objectives of the project

Following the development of a set of images presenting various scenarios for groundwater, this project aimed to develop images for a series of new target areas:

- Karst
- Monitoring
- Groundwater and surface water interactions (including rivers)
- Groundwater flow
- Saline intrusion
- Floodplains
- Groundwater pollution

The new images would be hosted on the wfdvisual.com website.

Background

WFDVisual has been developed by SNIFFER in partnership with the Environment Agency (England and Wales), the Geological Survey of Ireland, the Environmental Protection Agency (Republic of Ireland) and the Scottish Environment Protection Agency.

The website www.wfdvisual.com is a collection of images that have been developed to help communicate the complex processes underpinning the water environment and its management under the Water Framework Directive (WFD).

The website was launched in 2007, providing specialists and non-specialists with access to thousands of images depicting different groundwater pressures within varying topographic and geological settings. Registered users can select specific images set in any three landscape/land use settings (rural lowland, rural upland and urban lowland) to meet their own individual requirements.



urban lowland setting; image developed in 2007

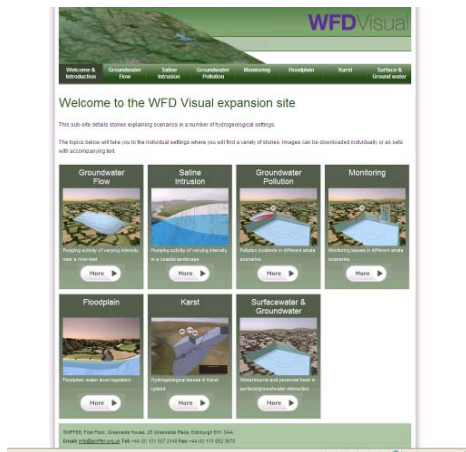
Project outputs

The project has produced over 70 new images for karst, floodplain, fluvial and coastal settings. In contrast to the original WFDVisual images (which can be customised by the user to meet specific requirements), these new 'storyboard' images come in pre-packaged groups to help the user explain common hydrogeological scenarios.

Through these visuals, users can quickly and easily understand the way water interacts with various elements within the British and Irish landscapes.

Each storyboard starts with an overview of the landscape; the landscape is then cut-away to help explain the hydrogeological processes. As the user moves through the images, the descriptive text helps to explain the evolving conditions.

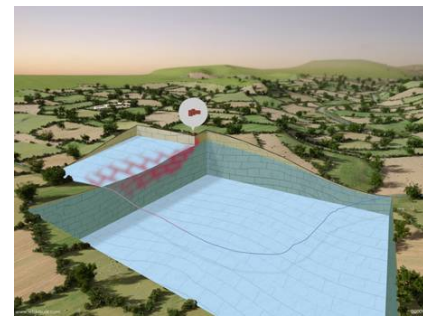
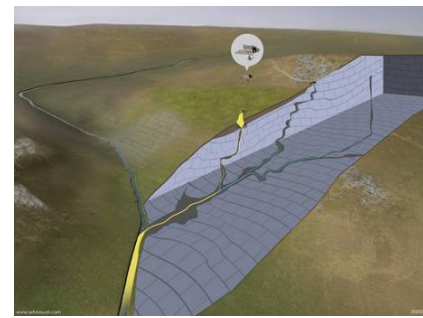
The images can be browsed and downloaded at www.wfdvisual.com/storyboard/index.html



SNIFFER intends that the images should be used by a broad audience to help convey the importance of hydrogeological processes in managing the water environment. To that end, all images on the website are freely available to the public for non-commercial, not-for-profit use.

Next Steps

SNIFFER would be pleased to hear any feedback about WFDVisual, including requests or suggestions for new images. SNIFFER would like to explore additions to this website and or continued support for existing content with potential partners.



^ example images from karst, floodplain, and groundwater pollution settings

Further Information

Contact for further information:
SNIFFER
E-mail: info@sniffer.org.uk
Phone: 0131 557 2140

Date produced: November 2009

Partners



Contractor

Freeman-Christie

SNIFFER, First Floor, Greenside House, 25 Greenside Place, Edinburgh, EH1 3AA
Tel: +44(0) 131 557 2140 Fax: +44(0) 131 652 3670 Email: info@sniffer.org.uk www.sniffer.org.uk

Scottish Charity No SC02375,
Company No SC149513. Registered in Edinburgh. Registered Office: Edinburgh Quay, 133 Fountainbridge, Edinburgh, EH3 9AG