

The Water Framework Directive- River Basin Management Plans

Gabriel Nelson – NIEA

Presentation Overview

- Background of Water Framework Directive, timetable and process.
- Classification and summary of results.
- Establishing Objectives
- Developing Programmes of Measures
- Approach to implementation
- Progress on climate change

What is a RBMP ?



The plans cover:

groundwater

wetlands

rivers

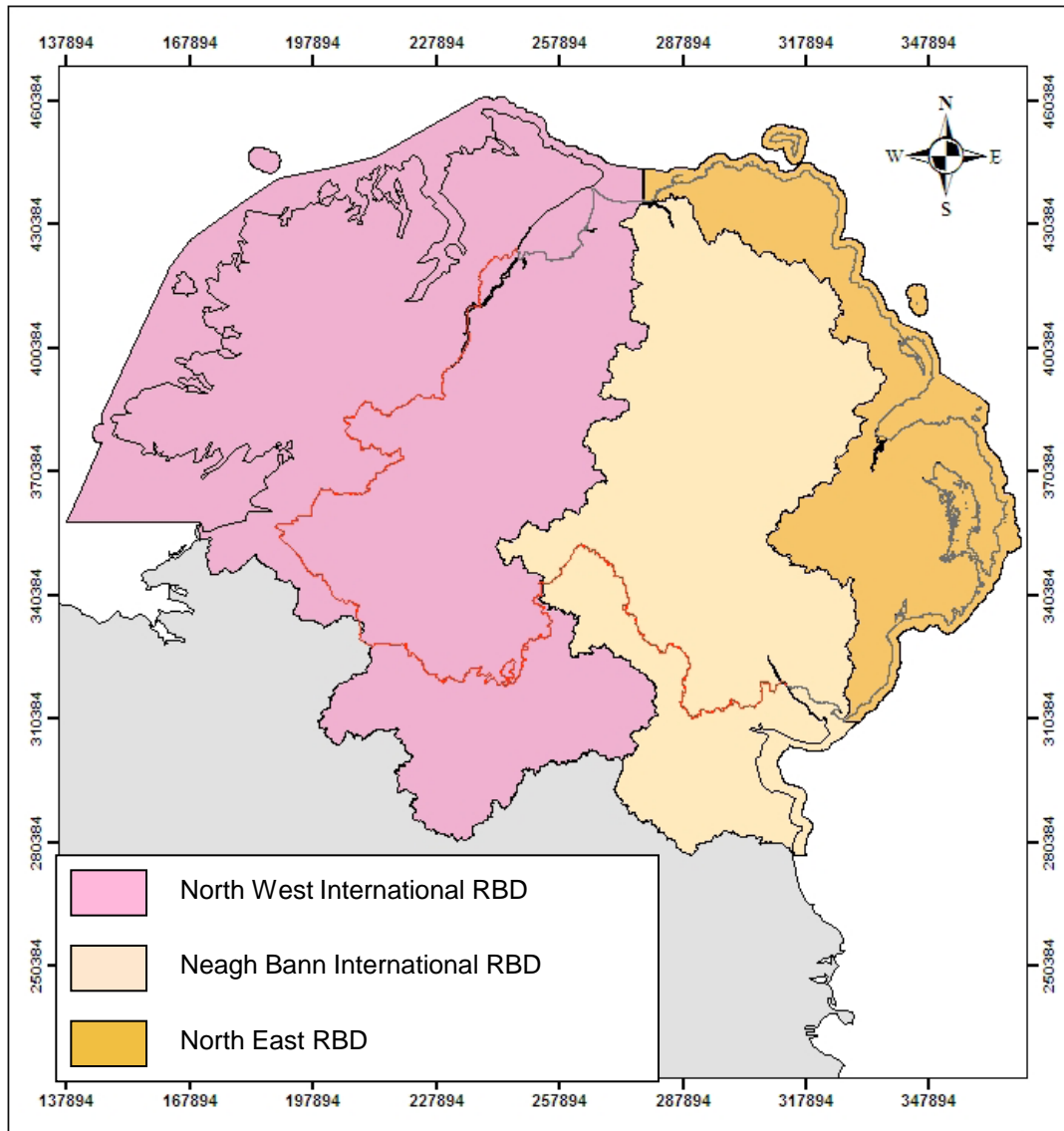
lochs/lakes/loughs

transitional waters (eg estuaries)

coastal waters

Set out the objectives to be achieved
and the actions required.

Northern Ireland River Basin Districts



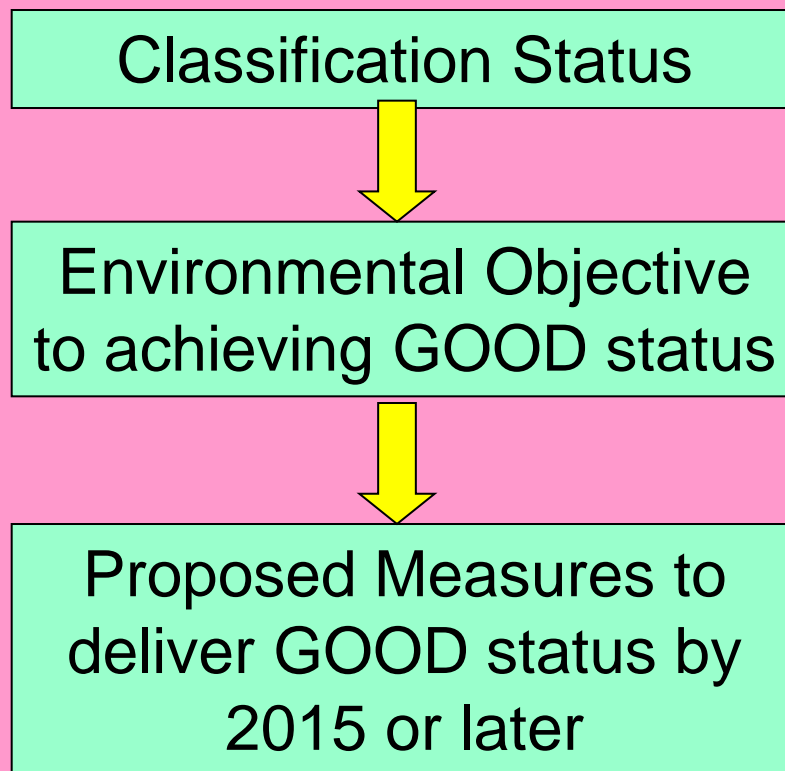
Time Frame for River Basin Management Plans (RBMPs)

- 1st cycle – 2009 to 2015
- 2nd cycle – 2015 to 2021
- 3rd cycle – 2021 - 2027

Timetable

Dec 2008	Publish draft RBMP for 6 month consultation
Dec 2009	Publish 1st RBMP
Jan 2010	Pricing policies for cost recovery of water services
Dec 2012	Programme of measures operational
Dec 2013	Publish Overview of Significant Water Management Issues for 2nd RBMP
Dec 2014	Publish draft of 2nd RBMP
Dec 2015	Achieve Environmental Objectives – 1st RBMP and publish 2nd RBMP

Water Framework Directive Steps



Summary of Water Body Status 2008

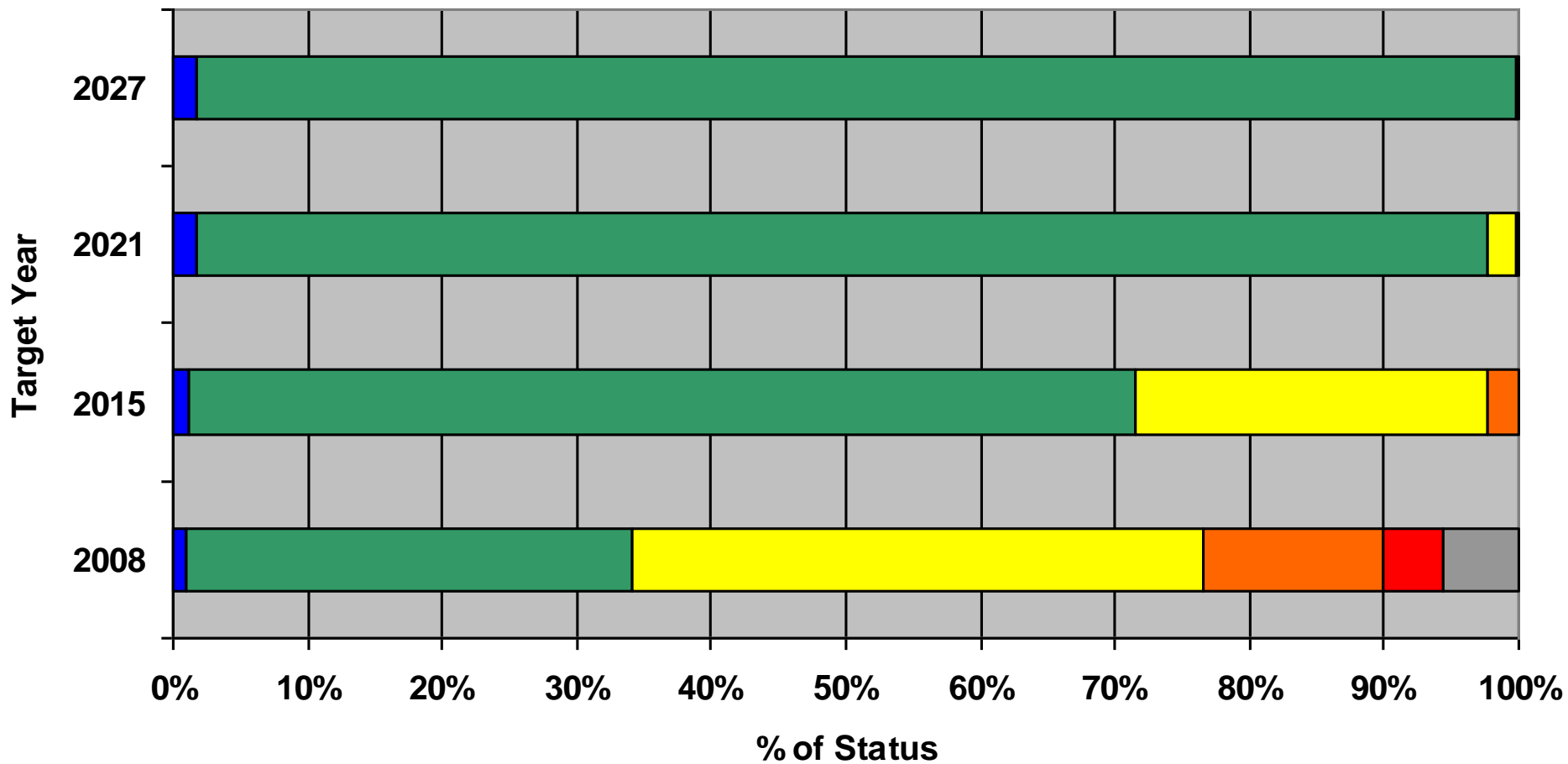
STATUS	RIVERS	Lakes	Coastal	Transitional	Ground	ALL WBs
HIGH	7	0	0	0		7
GOOD	144	3	10	0	64	221
MODERATE	260	10	9	5		284
POOR	81	4	0	1	3	89
BAD	22	5	1	1		29
Unclassified	38					38
TOTAL	552	22	20	7	67	668

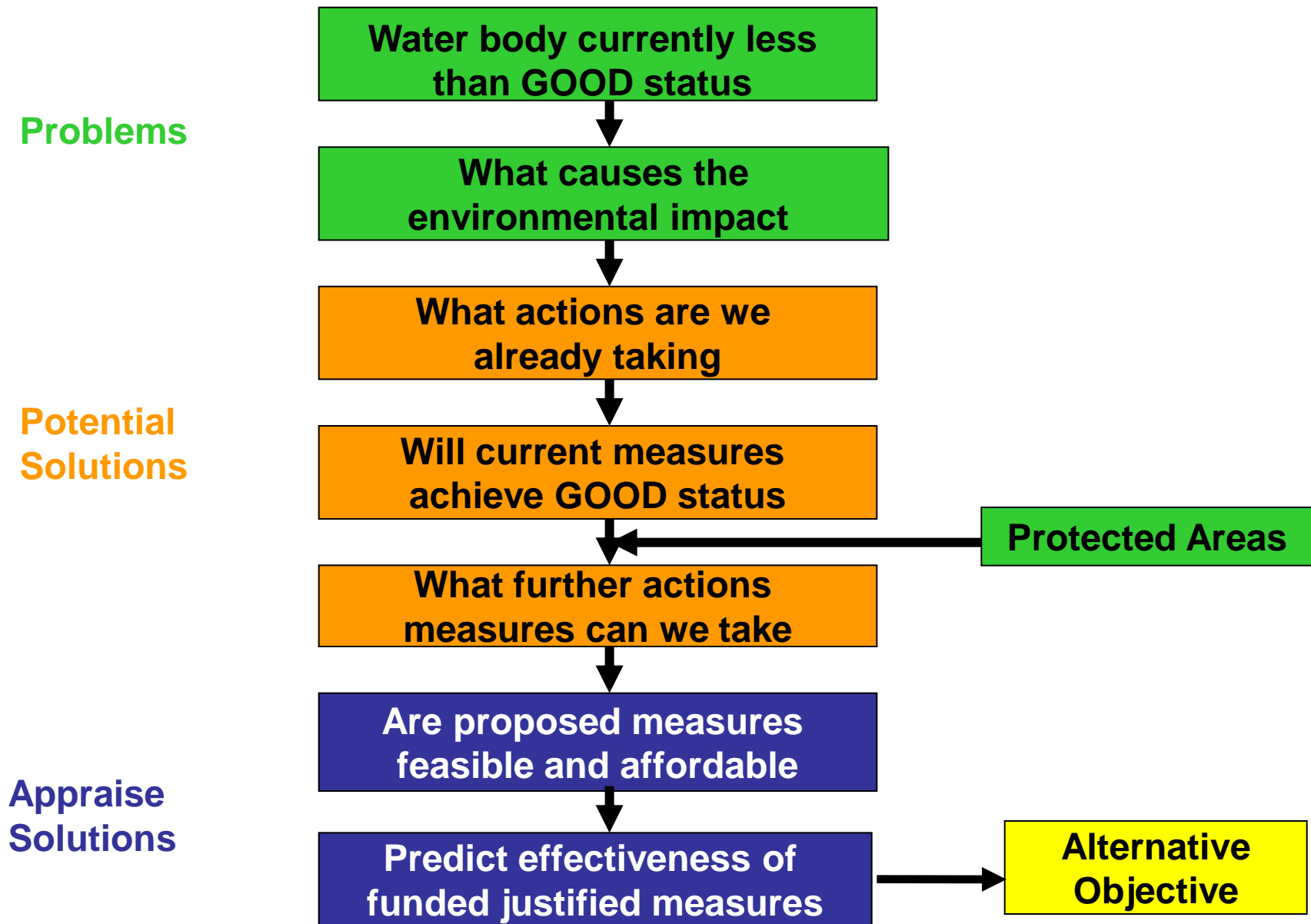
Summary of Water Body Status 2008

Water Body Type	Percentage Good or Better
Rivers	29.4%
Lakes	13.6%
Coastal	50.0%
Transitional	0.0%
Groundwater	95.6%

Projected Change in Status - Northern Ireland

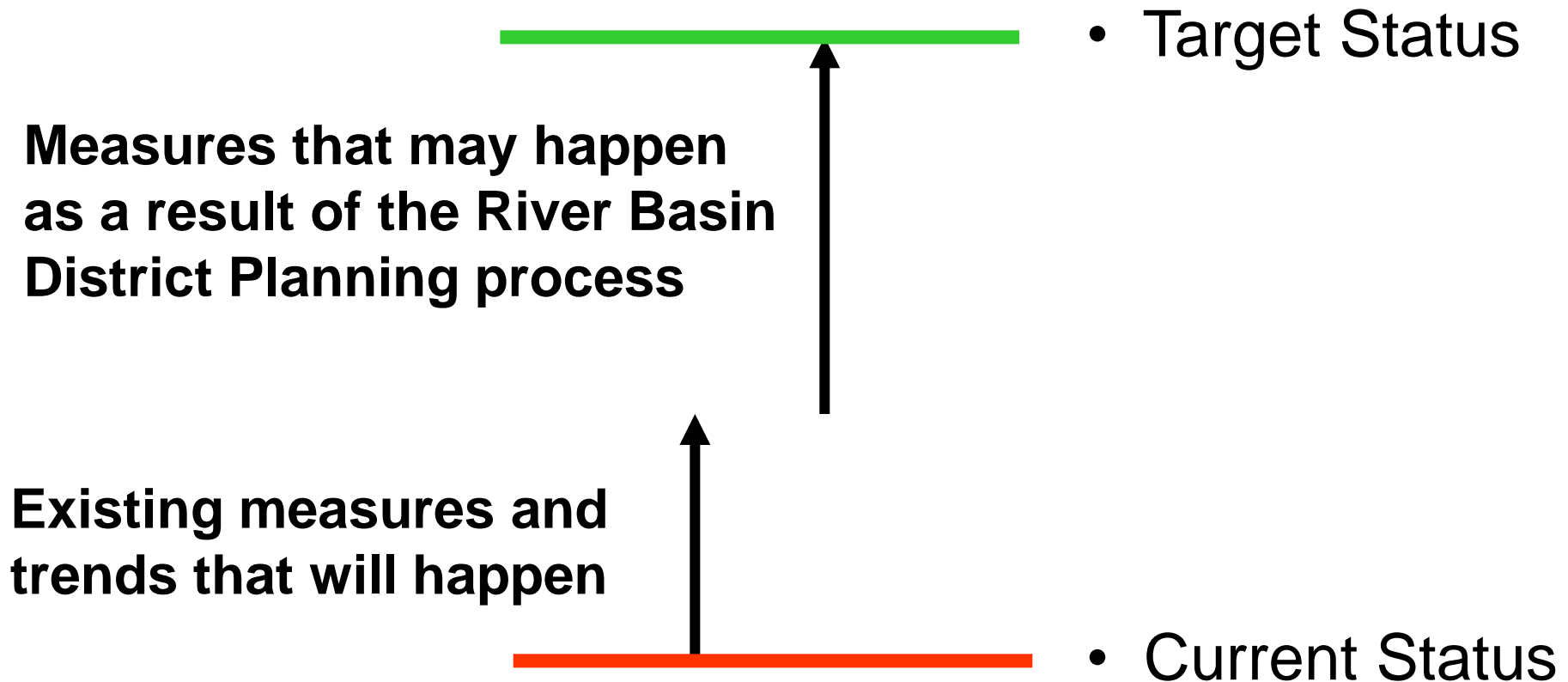
■ HIGH ■ GOOD ■ MODERATE ■ POOR ■ BAD ■ UnClassified





What will existing measures achieve?

Process of filling the gap between current status and target status for each pressure/status component

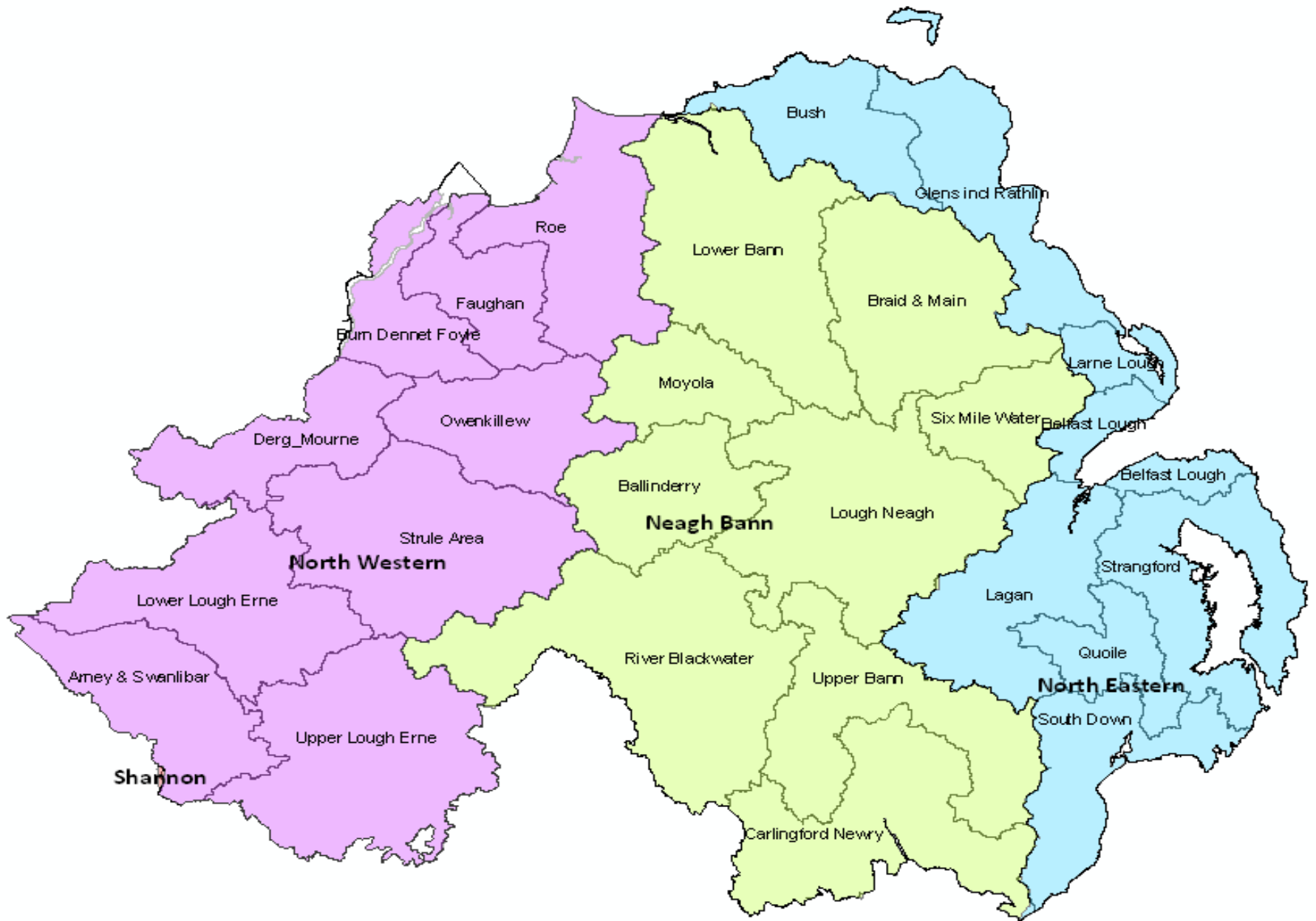


Supplementary Measures

- Low/zero phosphorus (P) detergents
- Improved education and awareness campaigns
- Targeted advisory visits and inspections
- Develop Catchment models
- Further investigate sources and options for further removal of P from point discharges and diffuse sources

Implementation of RBMPs

- Divided NI into 26 Local Management Areas – based on sub-catchments



Implementation of RBMPs

- Divided NI into 26 Local Management Areas – based on sub-catchments
- Development of prioritisation matrix – extent and scale of failure to meet WFD objectives and protected areas
- Enables targeting of resources and local engagement

Water Framework Directive and Climate Change

- EU Commission White Paper “Adapting to climate change: Towards a European framework for action”; 1 April 2009
- Identifies the WFD as key in establishing a mechanism to prepare for and adapt to climate change in the area of water management
- 1st RBMPs – take into account cc impacts
- 2nd RBMPs – fully climate proofed.

Progress to Date

- Draft RBMPs – ‘climate checking’ of measures
- Areas for action – changes in flow regime, flooding, abstractions and pollution run-off
- SEA Environmental Reports – assessed climatic factors linked to supplementary measures

Thank you
Go raibh maith agaibh